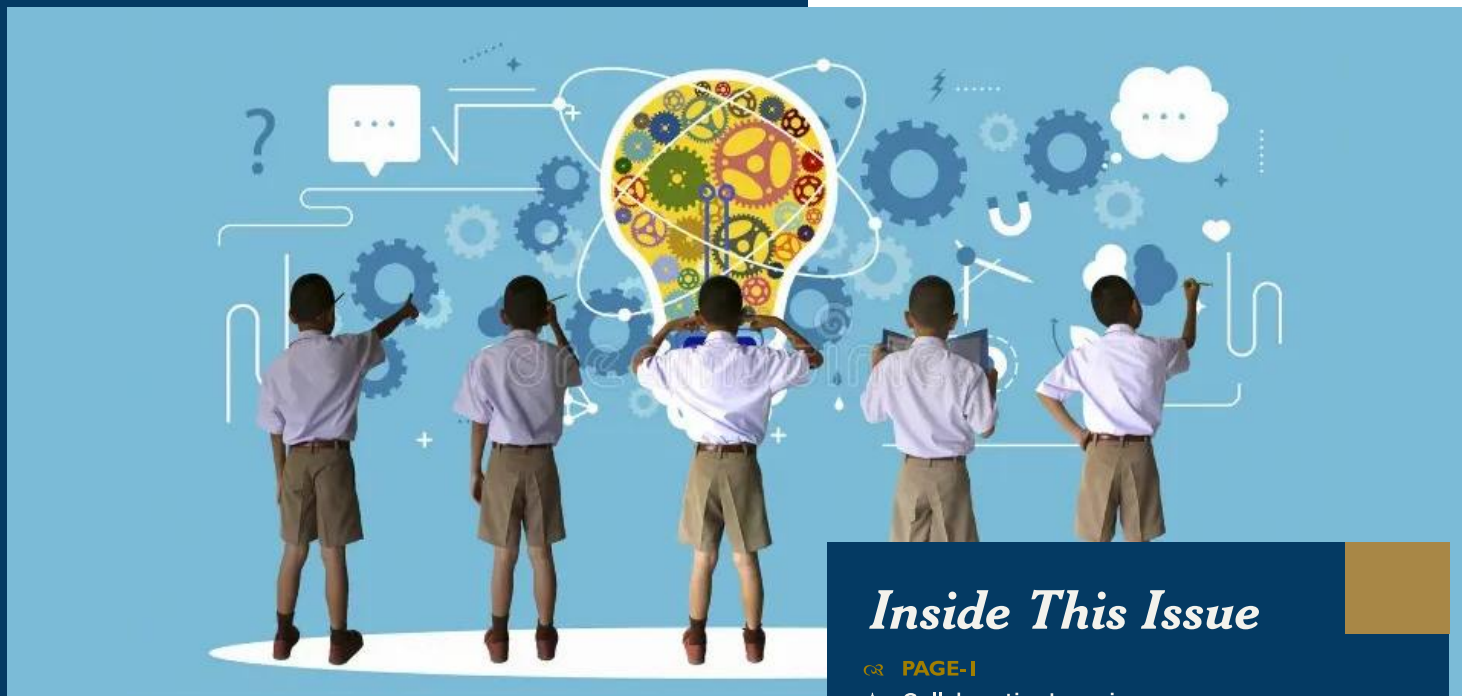


MANY REASONS TO BE PROUD.....

SEL NEWSLETTER VOLUME 6 | ISSUE 4 | MARCH 2024

@SEL

Synergising the 'SHRI' Perspective



Inside This Issue

QR PAGE-1

- ✦ Collaborative Learning
- ✦ Communication Skills

QR PAGE-2

- ✦ Socratic Learning
- ✦ Reviving The Power of Nursery Rhymes:

QR PAGE-3

- ✦ Integrating Digital Citizenship in The Classroom!
- ✦ Experiential Learning

QR PAGE-4

- ✦ Shri Connect: The School ERP

QR PAGE-5

- ✦ LSA & Family Day 2024

QR PAGE-6

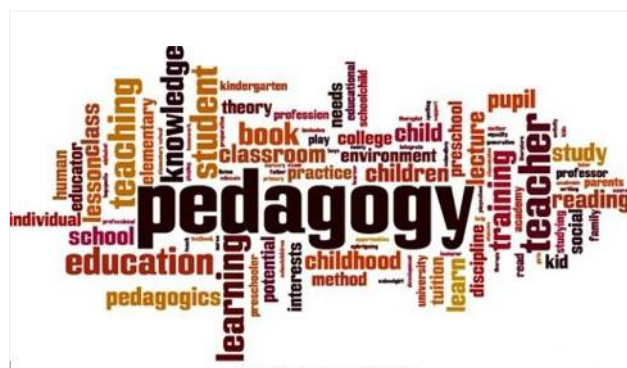
- ✦ Admin Conclave
- ✦ Shri Cheers
- ✦ Coming Up-Leadership Conclave May 2024

FROM THE EDITORS' DESK

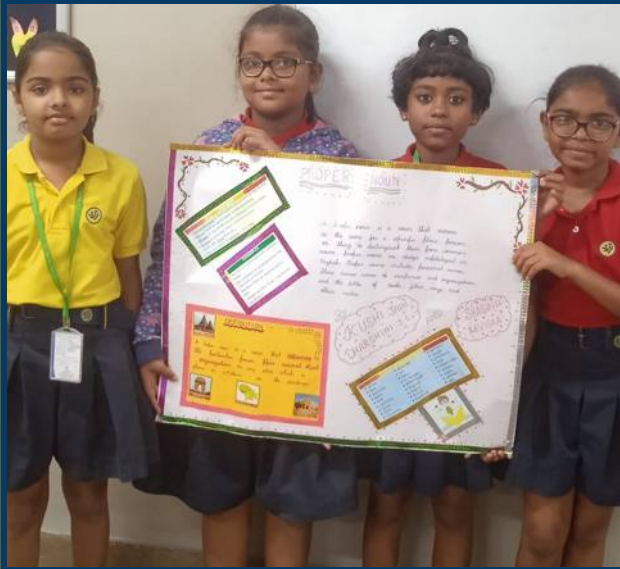
In the ever-evolving landscape of education, our schools stand as a beacon of innovation, actively embracing and implementing the latest pedagogical practices to ensure a dynamic and enriching learning experience for our students. As we move ahead, it is imperative that our educational approach evolves to meet the needs of an ever-changing world, and our commitment to progressive pedagogy reflects this dedication. One of the cornerstones of our pedagogical philosophy is the emphasis on student-centered learning. Our educators understand that each student is unique, possessing his or her own learning style, pace and interests.

From interactive smartboards to personalized learning platforms, students have access to a myriad of tools that enhance their engagement and understanding of complex concepts. This not only prepares them for the digital age but also cultivates essential skills such as critical thinking, collaboration and adaptability.

Our schools invest in the professional development of educators, providing opportunities for training, workshops and collaboration with experts in the field. Our commitment to progressive education is a testament to our dedication to providing an exceptional and transformative learning experience for every student who walks through our doors.



Where learning is a lifelong adventure...



COLLABORATIVE LEARNING

“The True strength in our classrooms lies in the collaboration of learners, not in the knowledge of one expert.”

Collaborative learning in schools has gained prominence as an effective pedagogical approach, transcending traditional teaching methods. This article explores the various dimensions and benefits of collaborative learning, shedding light on how it transforms the educational landscape.

It benefits the students by enhancing their Critical Thinking; Collaborative learning encourages students to engage in discussions, share perspectives and think critically about the subject matter leading to improved Communication Skills. Interacting with peers cultivates effective communication, an essential skill for personal and professional success.

Collaborative learning in schools serves as a catalyst for educational transformation, fostering a dynamic and engaging environment. By embracing various collaborative methods and addressing challenges, educators can create a rich and inclusive learning experience that prepares students for the complexities of the modern world. As the educational landscape evolves, collaborative learning stands out as a cornerstone for cultivating lifelong learners equipped for success in an interconnected society.



COMMUNICATION SKILLS



Effective communication skills are essential in school environments for successful interactions among students, teachers and parents.

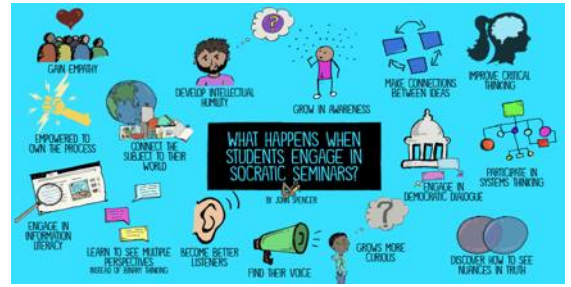
Effective communication in schools extends beyond verbal expression, encompassing digital literacy, social skills, emotional intelligence and

adaptability.

Providing opportunities for students to take on leadership roles encourages the development of communication skills, responsibility and the ability to express ideas in a group setting. By nurturing a comprehensive set of communication skills, schools contribute to the overall development and success of their students. Group discussions are an integral part of building communication skills and becoming adept at it to face the world

SOCRATIC LEARNING

The Socratic seminar teaching strategy is an engaging method that fosters critical thinking, collaboration and deep understanding among students. This approach involves students engaging in thoughtful discussions about a text, concept, or topic.



In a Socratic seminar, students typically gather in a circle or in different groups to discuss a specific topic or concept, guided by open-ended questions posed by both the teacher and their peers. Through this strategy, students are encouraged to express their understanding, listen actively to

others, and constructively challenge each other's perspectives. The teacher's role is primarily that of a facilitator, guiding the discussion, asking probing questions, and ensuring that all voices are heard.

Socratic seminars can create an inclusive learning environment where students take ownership and learn from their peers.

Overall, the Socratic seminar teaching strategy is a powerful tool for promoting critical thinking and collaborative learning in the classroom.

REVIVING THE POWER OF NURSERY RHYMES:



A call to foster language learning and connection in today's children.

Traditional rhymes, with their repetitive rhythms and familiar catchphrases, foster phonemic awareness and linguistic fluency in ways that modern media fails to emulate

Nursery rhymes and songs, with their inherent playfulness and accessibility, serve as versatile tools for holistic learning and emotional support.

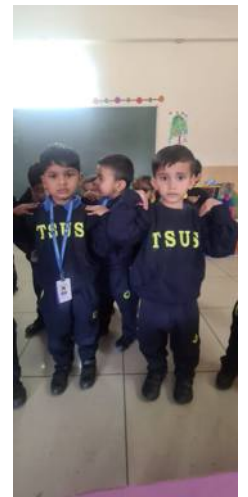
Language development, the cornerstone of early education, flourishes through recitation and singing. Children expand their vocabulary, refine pronunciation, and internalize the rhythm of language, all while honing essential reading skills..

Perhaps most importantly, nursery rhymes and songs offer solace and reassurance to children in times of emotional upheaval. They serve as familiar touchstones, evoking



memories of shared moments and nurturing a sense of security in unfamiliar surroundings

Their inherent simplicity opposes a profound capacity to nurture young minds, fostering not only literacy and numeracy but also creativity, resilience, and emotional intelligence. Let us follow the wisdom of past generations and reclaim the transformative power of storytelling and rhymes in shaping the minds and hearts of the next generation.



INTEGRATING DIGITAL CITIZENSHIP IN THE CLASSROOM!



In our increasingly connected world, technology permeates nearly every aspect of daily life.

Artificial intelligence (AI) and ChatGPT, the most talked about offerings of AI is reshaping both our classroom and workplace. With increased use of technology based on Internet, ubiquity of social and emergence of online platforms with Metaverse, it becomes imperative to educate students for online conduct. The Shri group of schools emphasize that our educators seamlessly weave digital citizenship and online safety into the curriculum so that our students are well equipped to traverse the digital landscape safely and learn to engage ethically. This can be achieved through engaging lessons, spirited discussions, and pertinent activities that highlight responsible online conduct. Our teachers lead by example to promote stellar digital citizenship, both during school hours and beyond. As per Indian Educational Framework, our educators take the onus to arm the students with skills, knowledge and tools to traverse the digital responsibly.

We team up to foster a cooperative spirit among educators, parents and regulatory bodies to inspire our students to be digital champs while safeguarding their digital health.

EXPERIENTIAL LEARNING

Experiential learning is the process of assimilating knowledge through hands on experiences. It is believed that what is learnt through personal and social experiences is always retained better. Experiential learning is driven by sensory perception and reflection of concepts, hence is extremely relatable. It allows students to construct their own understanding by manipulating resources and



situations and the role of the educator in this process is only that of a facilitator.

Experiential learning occurs when carefully chosen experiences are supported by reflection, critical analysis and synthesis. Experiences are

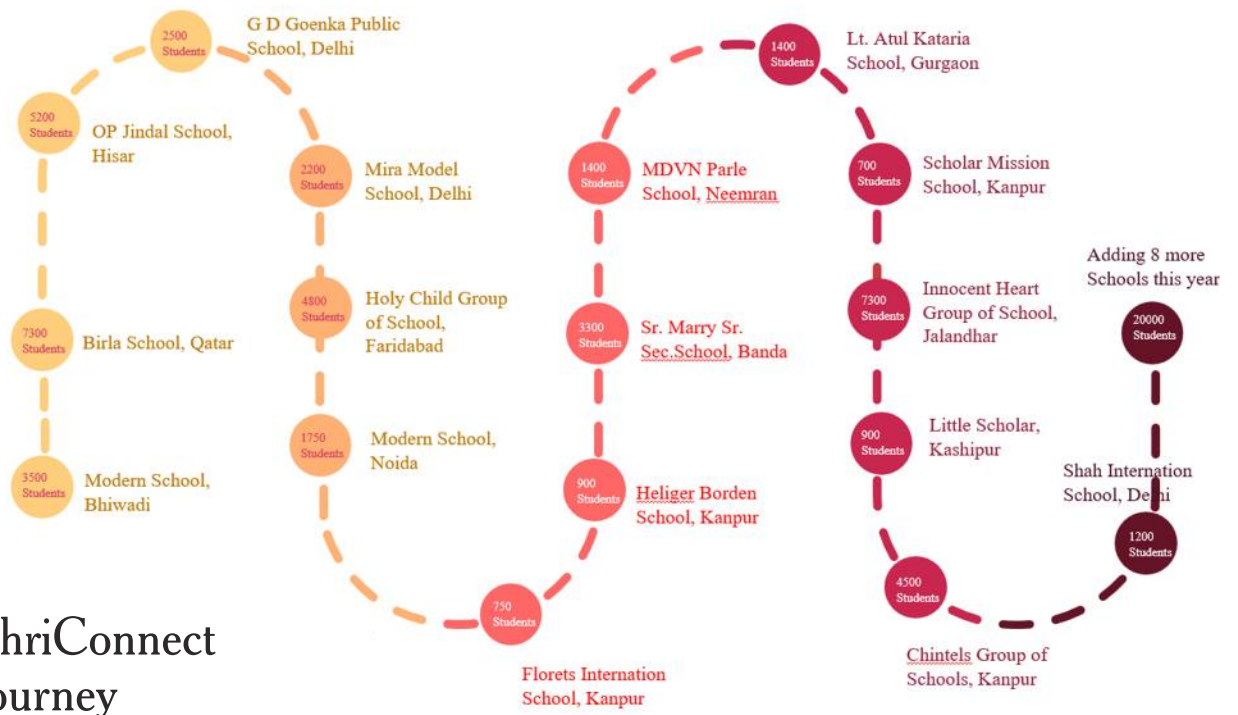
structured in a way that students take initiative, make decisions and are accountable for results. Experiential learning promotes inquiry and helps develop in students problem solving abilities. By engaging students in this form of learning we Encourage Higher Order Thinking and develop essential 21st Century skills.



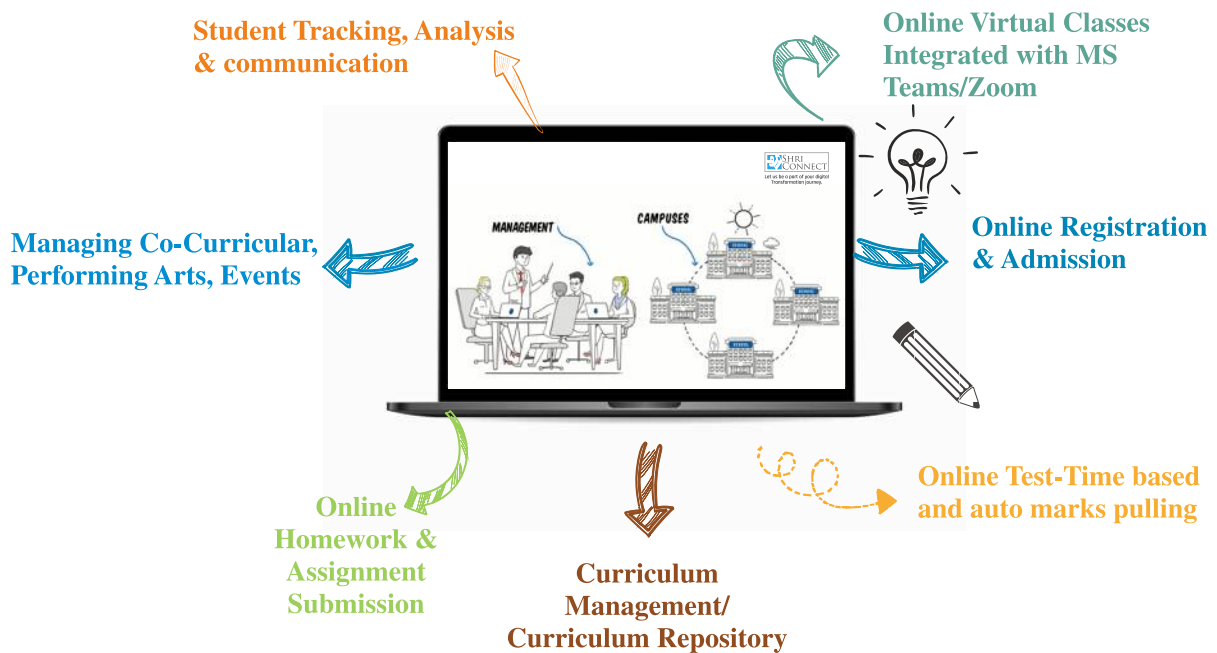
SHRI CONNECT: THE SCHOOL ERP

Spreading Footprints.....

Shri Connect- A comprehensive IT solution for schools that caters to both academic and administrative processes of the institution and impacts all stakeholders- Students, Teachers, Administrators, Parents or potential parents. It promises to provide a robust system and is rapidly spreading far and wide by signing up challenging new projects so as to foster a future of quality education system. Shriconnect has recently been awarded 'The Innovative School ERP Solutions at the 26 Elets World Education Summit in recognition of their stupendous work in the field.



SPECIAL FEATURES



LSA & FAMILY DAY
2024

'You grow on the fringes where comfort meets discomfort'- Dam Rockwell

Each year at the Long Service Awards event, dedication and efforts of employees are honoured acknowledging their enduring commitment to the organisation. It's a celebration of the profound connection that is shared with our team members, highlighting their relentless efforts, zeal and contributions to the organization. Following members of Shrieducare have been bestowed with special honour and felicitations for their diligent efforts that have always created a rhythm of trust and admiration. They have been instrumental in shaping the remarkable journey of Shrieducare. Their hardwork and self-less contributions are truly valued and celebrated by all.

A Very Special Moment...



Mr. Kartik
Bharat Ram

30
* years *



Sheelam Seth

30
* years *



Mr. Achish
Bharat Ram

30
* years *



Komal
Dua

5
* years *



Amit Bhagria

15
* years *



Jehita
Sanyal

5
* years *



Ritu
Mehta

5
* years *



Parmeshwar
Mishra

5
* years *



Shaveta Bhagria

5
* years *



Rahul
Kumar

5
* years *

ADMIN CONCLAVE

SEL Admin Conclave was held on 01 and 02 Feb 24, a pioneering initiative aimed at fostering collaboration and knowledge exchange among Administrative Heads of schools across India. A perfect platform for enriching discussions, insights and sharing best practices in our schools.

The programme was packed with enlightening sessions: By Ms Girija on best practices that have steered success; By Ms Amarinder and Ms Sudha on 'Shri Ways' and 'Shri Philosophy'; By Momentum India on Basic First Aid and Disaster Response.



TSUS
Gandhidham

TSUS
Pune

Coming up.....

LEADERSHIP CONCLAVE MAY 2024

Following the resounding success of the first Leadership Conclave at DMS IIT Delhi in 2023, we are thrilled to share the exciting news of the imminent second Leadership Conclave, in collaboration with IIM Ahmedabad. Set to unfold on **May 30 and 31 2024**, this event holds great significance and we eagerly anticipate the esteemed presence and active engagement of valued members of our esteemed organisation.



SHRI EDUCARE LIMITED

Unitech Business Zone, Tower - C, 1st Floor, Nirvana Country, Sector 50, South City 2, Gurugram 122018 • Tel: +91 124 452 9900
www.shrieducare.com, www.shriconnect.com

Consultancy Schools presently in Gurugram | Malé | Noida | Faridabad | New Delhi | Pune | Hyderabad | Rohtak | Palava | Jammu | Hisar | Ludhiana | Dehradun
Ghaziabad | Chennai | Greater Noida West | Thane | Bangalore • Coming up in Gandhidham | Kolkata | Pune